

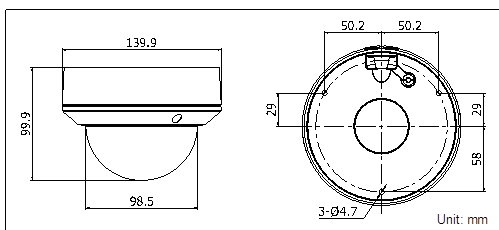
DS-2CD2712F-I(S) (1.3MP)/DS-2CD2732F-I(S) (3MP) VF IR Dome Network Camera



Key features

- 1.3MP / 3MP high resolution
- HD real-time video
- IR LEDs: up to 30m
- DWDR & 3D DNR & BLC
- Onboard storage (up to 64GB)
- (-S) Audio I/O, Alarm I/O
- IP66
- Vandal-proof

Dimensions



Accessories



Available models

DS-2CD2712F-I, DS-2CD2712F-IS
DS-2CD2732F-I, DS-2CD2732F-IS

* -S: Audio I/O (MIC IN) interface and Alarm I/O interface.

	DS-2CD2712F-I (S)		DS-2CD2732F-I (S)	
Camera				
Image sensor	1/3" progressive scan CMOS			
Min. illumination	0.01 lux @F1.2, AGC ON, 0 lux with IR		0.07 lux @F1.2, AGC ON, 0 lux with IR	
Shutter time	1/3s ~ 1/100,000s			
Lens	2.8 ~ 12 mm @F1.4, angle of view: 98.4° ~ 30.2°		2.8 - 12 mm @ F1.4,Angle of view: 91.2°-28.3°	
Lens mount	Φ14			
Auto iris	DC drive			
Day & night	ICR			
Digital noise reduction	3D DNR			
Wide dynamic range	Digital WDR			
Backlight compensation	Yes, zone configurable			
Angle adjustment	Pan:0° - 355°, Tilt: 0° - 75°, Rotation: 0° - 355°			
Compression Standard				
Video compression	H.264 / MJPEG			
H.264 codec profile	Main profile			
Bit rate	32 Kbps ~ 12 Mbps			
Audio compression(-s)	G.711 / G.722.1/ G.726 / MP2L2			
Audio bit rate(-s)	64 Kbps (G.711) / 16Kbps(G.722.1) / 16 Kbps (G.726) / 32-128 Kbps(MP2L2)			
Image				
Max. Image Resolution	1280 × 960		2048 × 1536	
Frame rate	50 Hz: 25 fps (1280 × 960), 25 fps (1280 x 720), 25 fps (704 x 576), 25 fps (640 x 480) 60 Hz: 30 fps (1280 × 960), 30 fps (1280 x 720), 30 fps (704 x 576), 30 fps (640 x 480)		50Hz: 20fps (2048 x 1536), 25fps (1920 × 1080), 25fps (1280 x 720) 60Hz: 20fps (2048 x 1536), 30fps (1920 × 1080), 30fps (1280 x 720)	
Image settings	Rotate mode, Saturation, brightness, contrast, sharpness adjustable through client software or web browser			
ROI	Support			
Network				
Network storage	NAS (Support NFS, SMB/CIFS)			
Alarm trigger	Line Crossing, Intrusion Detection, Motion detection, Tampering alarm, Storage exception			
Protocols	TCP/IP,ICMP,HTTP,HTTPS,FTP,DHCP,DNS,DDNS,RTP,RTSP,RTCP, PPPoE,NTP,UPnP,SMTP,SNMP,IGMP,802.1X,QoS,IPv6,Bonjour			
System compatibility	ONVIF, PSIA, CGI, ISAPI			
General functionalities	Flickerless, heartbeat, mirror, privacy mask, watermark, IP address filtering, Anonymous access			
Interface				
Communication interface	1 RJ45 10 M / 100 M Ethernet interface			
Onboard storage	Built-in Micro SD / SDHC / SDXC slot, up to 128 GB			
General				
Operating conditions	-30 °C ~ 60 °C (-22°F ~ 140 °F) humidity 95% or less (non-condensing)			
Power supply	12 VDC ± 10% , PoE (802.3af)			
Power consumption	Max. 5.5W			
Impact protection	IEC60068-2-75Eh, 20J; EN50102, up to IK10			
Ingress protection level	IP66			
IR range	20 to 30 meters			
Dimensions	Φ140 x 99.9 mm (Φ 5.51" x 3.94")			
Weight	1000g			