

DS-2DE3304W-DE

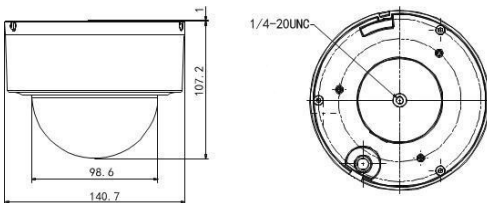
3 MP Network Mini PTZ Repositionable Dome Camera



Key Features

- Easy Installation and Setup
- Remote Positioning of Pan/Tilt/Zoom
- 1/2.8" Progressive Scan CMOS 2048 x 1536
- 4x Optical Zoom, 16x Digital Zoom
- 0° to 350° Pan, 5° to 90° Tilt, 10°/Sec.
- DWDR
- IP66/IK10 Rated
- PoE (802.3af)
- Supports RS-485
- Supports Plug & Play
- Adapter Plate for Surface Mounting

Dimensions



Order Models

DS-2DE3304W-DE

Accessories



Pendant Cap
PC140PT



Wall Mount
WML or WMS



In-Ceiling Mount
RCM-4



Conduit Base
CB140PT



Vertical Pole Mount
PM



Corner Mount
CM



Network Keyboard
DS-1100KI



USB Joystick
DS-1005KI

DS-2DE3304W-DE	
Camera Module	
Image Sensor	1/2.8" progressive scan CMOS
Minimum Illumination	f/1.6, AGC on, color: 0.05 lux, B/W: 0.01 lux
Maximum Image Resolution	2048 × 1536
Focal Length	2.8 mm to 12 mm, 4x
Digital Zoom	16x
Angle of View	105° to 33.5° (wide to tele)
Aperture Range	f/1.6 to f/2.7
Focus Mode	Auto/semiautomatic/manual
DWDR	Supported
S/N Ratio	≥ 52 dB
Shutter Speed	1/1 to 1/10,000 s
AGC	Auto/manual
White Balance	Auto/manual/ATW/indoor/outdoor/daylight lamp/sodium lamp
Day/Night	IR cut filter
Privacy Mask	8 privacy masks programmable
Enhancement	3D DNR, HLC/BLC
Pan and Tilt	
Range	Pan: 0° to 350°; tilt: 5° to 90°
Speed	Pan: 0.1° to 60°/sec (manual), 30°/s (preset) Tilt: 0.1° to 50°/sec (manual), 25°/s (preset)
Number of Presets	300
Patrols	8 patrols, up to 32 presets per patrol
Park Actions	Preset/patrol
Scheduled Tasks	Preset/reboot/patrol/self test/aux output
Features	
Detection	Intrusion detection, line crossing detection, audio exception detection, motion detection
ROI Encoding	Supports 4 areas with adjustable levels
Alarm	
Alarm I/O	1/1
Alarm Triggers	Intrusion detection, line crossing detection, motion detection, audio exception detection, dynamic analysis, tampering alarm, network disconnect, IP address conflict, storage exception
Alarm Actions	Preset, recording, relay output, upload center, upload FTP, e-mail linkage
Input/Output	
Audio Input	1 audio input (mic/line in), 2 to 2.4V(p-p); output impedance: 1K Ω, ±10%
Audio Output	1 output, line level, impedance: 600 Ω
Network	
Ethernet	10Base-T/100Base-TX, RJ-45 connector
Main Stream	30 fps @ 2048 × 1536, 1920 × 1080, 1280 × 960, 1280 × 720
Sub Stream	30 fps @ 704 × 480, 640 × 480, 320 × 240
Image Compression	H.264/MJPEG
Audio Compression	G.711ulaw/G.711alaw/G.726/MP2L2/G.722/PCM
Protocols	IPv4/IPv6, HTTP, HTTPS, 802.1X, QoS, FTP, SMTP, UPnP, SNMP, DNS, DDNS, NTP, RTSP, RTP, TCP, UDP, IGMP, ICMP, DHCP, PPPoE
Simultaneous Live View	Up to 20 users
MicroSD Memory Card	Supports up to 128 GB microSD/SDHC/SDXC card and edge recording
User/Host Level	Up to 32 users, 3 levels: administrator, operator, and user
Security Measures	User authentication (ID and PW); host authentication (MAC address); IP address filtering
System Integration	
Application Programming	Open-ended API, supports ONVIF, PSIA, CGI, and Genetec
Web Browser	IE 7+, Chrome 18+, Firefox 5.0+, Safari 5.02+
Power	POE, 12 VDC, maximum 8 W
Working Temperature	-30° C to 65° C (-22° F to 149° F)
Humidity	90% or less
Protection Level	IP66, TVS 4,000 V lightning, surge, and voltage transient protection
Certification	FCC, CE, UL, RoHS, IEC/EN 61000, IEC/EN 55022, IEC/EN 55024, IEC/EN 60950-1
Dimensions	Φ140.7 mm × 107.2 mm (5.54" x 4.22")
Weight (approx.)	950 g (33.5 oz)