

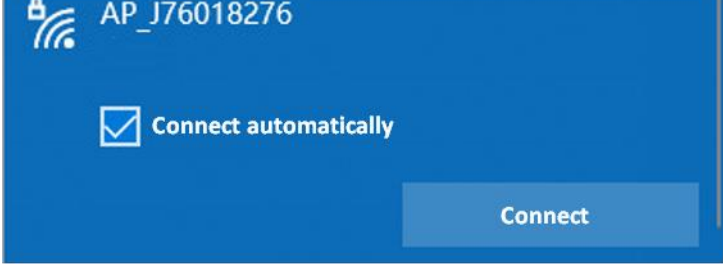
How to Upgrade Touch Display Module (DS-KD-TD)

When we upgrade DS-KD-TD series touch display module, it does not need to go to the door station > configuration to upgrade. Add display module to iVMS-4200 software and you can upgrade firmware on it.

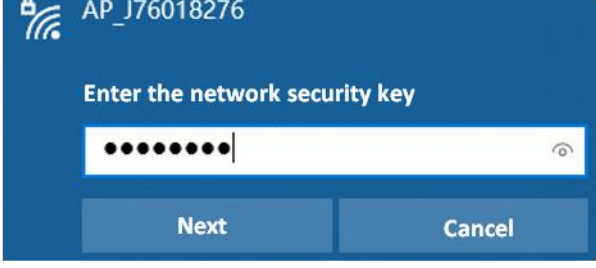
Below are the upgrade steps:

- 1, Power on the touch display module through the DS-KD8003(main module) .
- 2, The display module would generate Wi-Fi access point, name is “**AP_Device serial number of display module**”
- 3, Find the Wi-Fi access point name on your computer and input the activation password of DS-KD8003.

Notes: Only in this network , iVMS-4200 could search and upgrade touch display module.



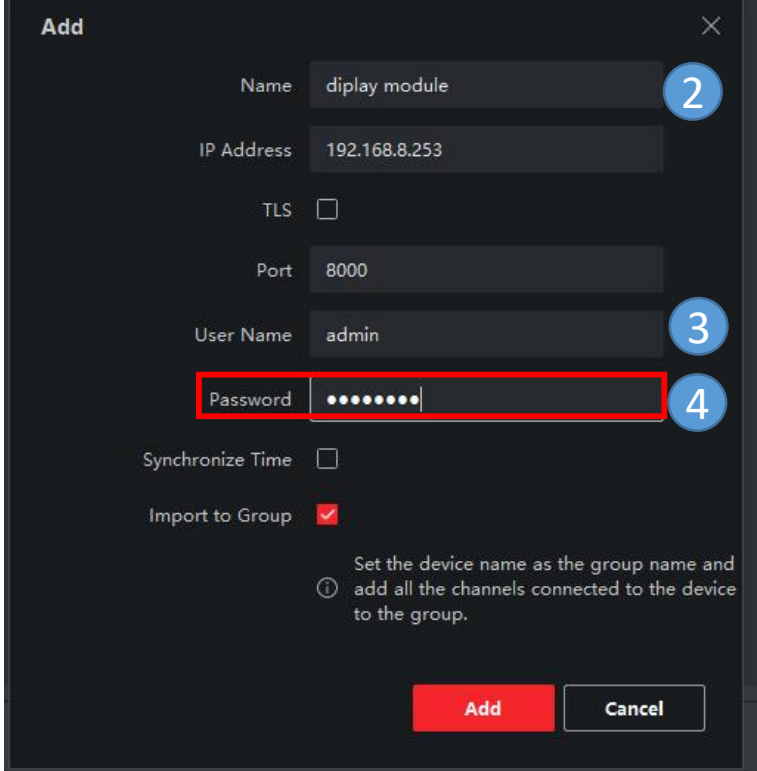
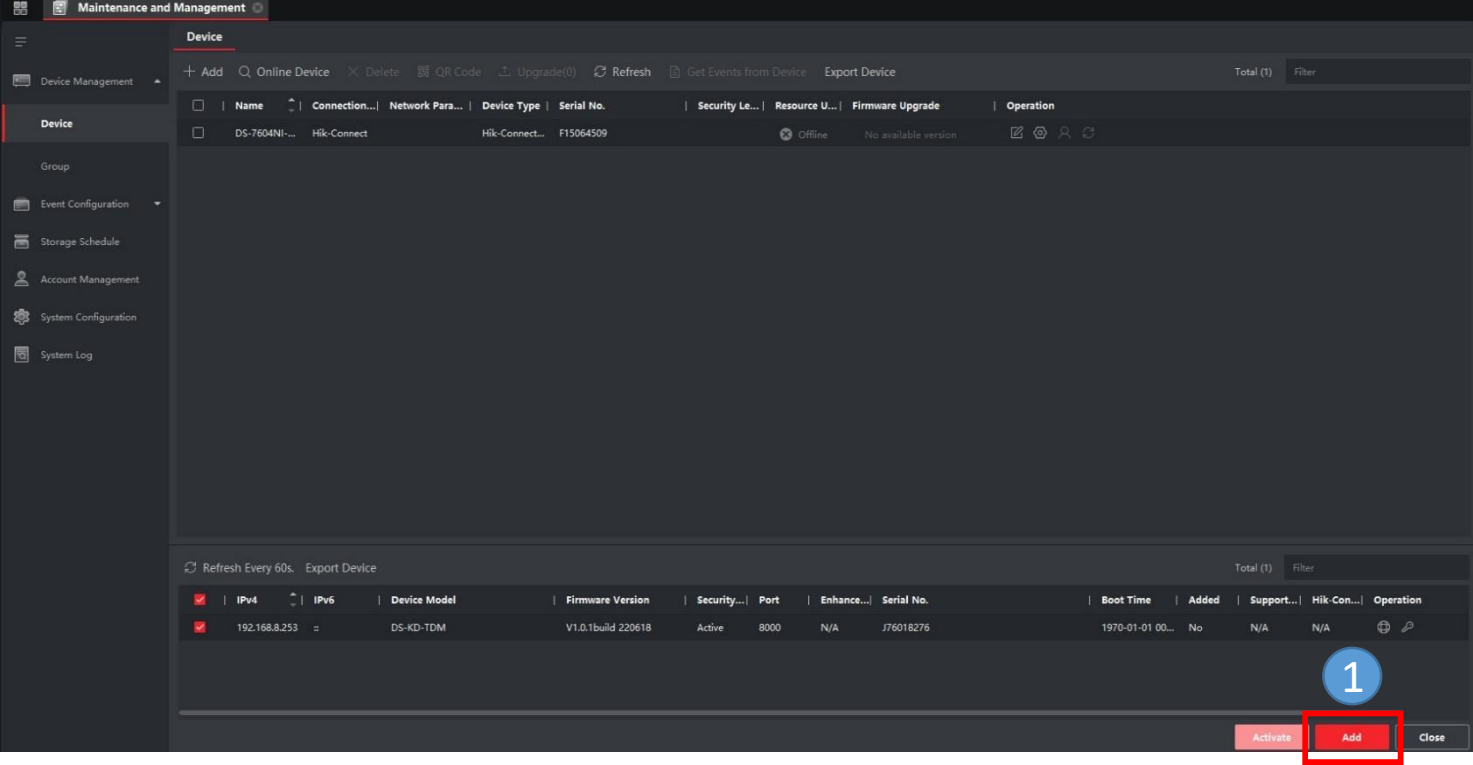
Search Wi-Fi access point



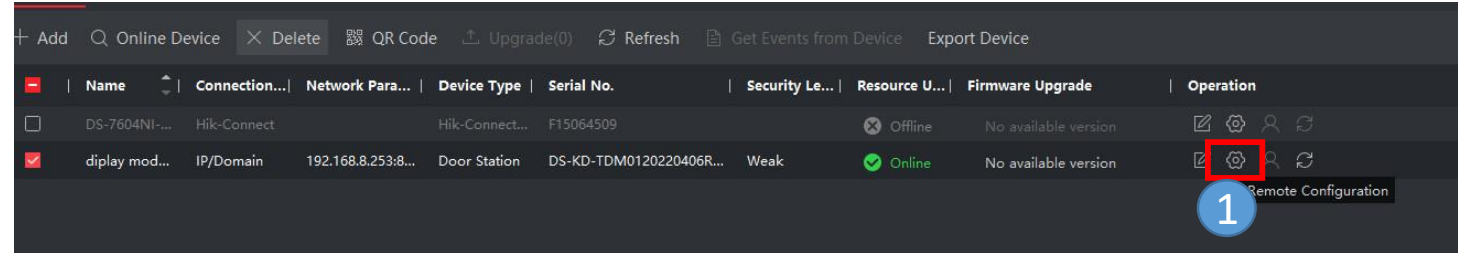
Input activation password of DS-KD8003 (Main module)

- 4, After connecting Wi-Fi, run iVMS-4200 software > Device Management module> find display module device on “ **Online device** ” , click **Add** to open page. Input **Name**(Customized),**User Name**: admin, **Password**: DS-KD8003 activation password, click **Add** button to finish adding display module.

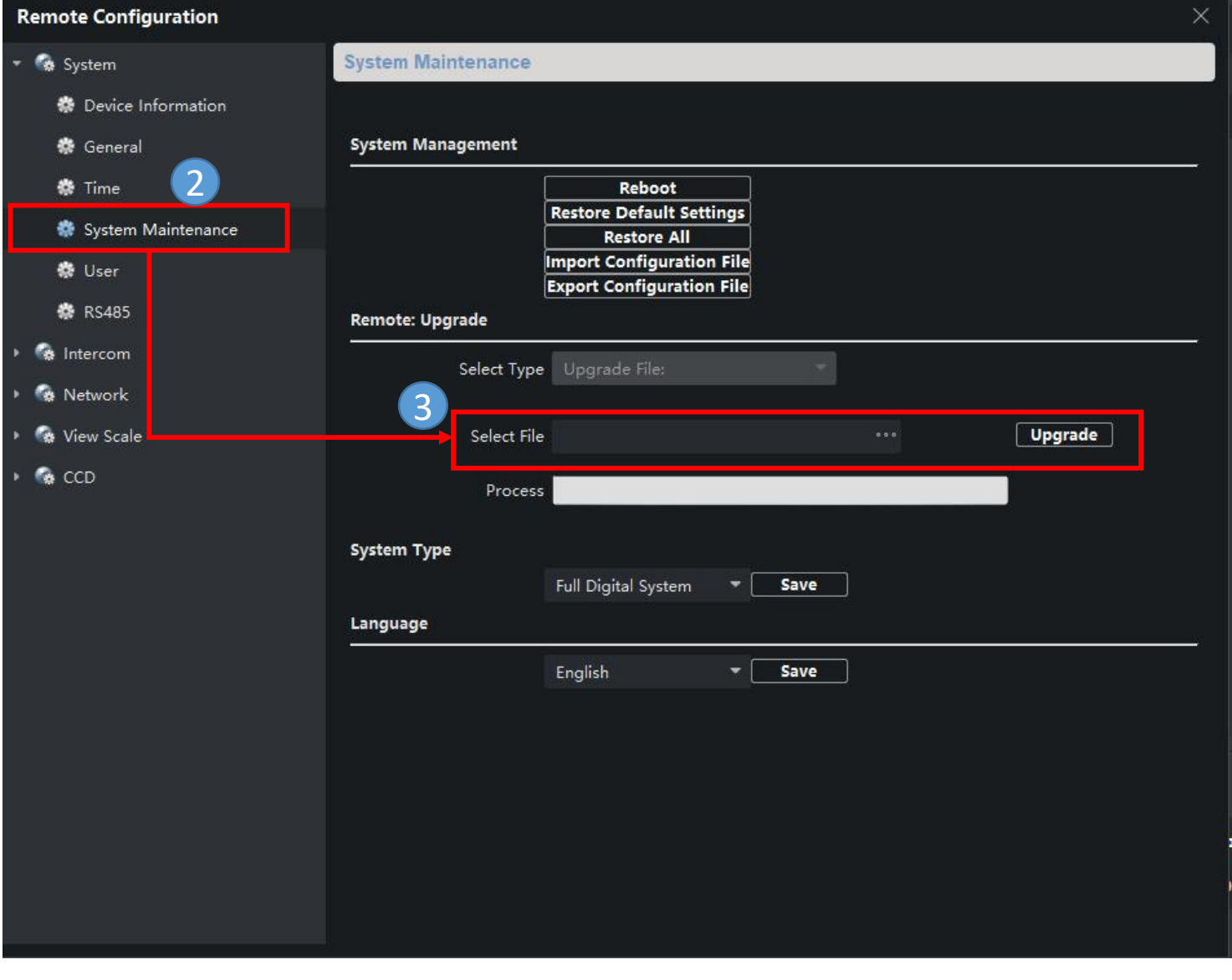
Notes: If you can't search the touch display module, please add manually with default IP address: 192.168.8.253



- 5, After adding the device to iVMS-4200, click Remote Configuration.



- 6, Click System Maintenance> Select file to upgrade device.



We only add touch display module to iVMS-4200 for firmware upgrade, other function please go to main module DS-KD8003 remote configuration-Intercom-sub module to configure.

